



## SOL PA501

### 10.1" Fully Rugged Tablet



IP65



MIL-STD-810G



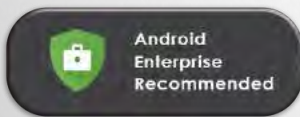
P-Cap



1000 nits



5-foot Drop



- ◆ 10.1" rugged tablet with Qualcomm® Octa-Core processor
- ◆ Android 9 Pie with Google Mobile Services certified
- ◆ Sunlight readable display supports night mode and stealth mode
- ◆ 4G LTE with hot-swap SIM card supported.
- ◆ 802.11ac 2x2 MU-MIMO, optional built-in NFC
- ◆ Hot-swap battery plus fast charging offers near indefinite capacity
- ◆ MIL-STD 810G and IP65 certified
- ◆ The dedicated expansion options maximize efficiency in the field



# Specifications

## System

- ◆ Qualcomm® Snapdragon™ 660 Octa-Core, 1.9GHz up to 2.2GHz
- ◆ 3GB LPDDR4 RAM
- ◆ 32GB eMMC storage
- ◆ OS : Android 9.0, Google Mobile Services (GMS) certified

## Display

- ◆ 10.1" TFT LCD WUXGA (1920 x 1200) 1000 nits
- ◆ Sunlight readable display supports night mode and stealth mode
- ◆ Capacitive 10-point multi-touch supports glove touch, 2mm hard tip stylus
- ◆ Gorilla Glass

## Communication

- ◆ IEEE 802.11ac 2x2 MU-MIMO
- ◆ Bluetooth V5.0
- ◆ 4G LTE
- ◆ GNSS (GPS/ GLONASS/ BeiDou)
- ◆ Optional built-in NFC

## Camera

- ◆ 8MP fixed focus front camera
- ◆ 13MP auto focus rear camera with LED flash

## Control Button

- ◆ Programmable button x 3
- ◆ Barcode trigger button x 1
- ◆ Power x 1, volume x 2, home button x 1

## Expansion Option

- ◆ Built-in 2D barcode reader (OCR supported)
- ◆ Fingerprint reader
- ◆ Snap-on connector easy for customization

## I/O Interface

- ◆ USB 3.1 type C x 1 (display port supported), USB 2.0 type A x 2
- ◆ RS-232 x 1 (available for option USB 2.0)
- ◆ Gigabit Ethernet (RJ45) x 1
- ◆ Audio headset jack (Headphone/ microphone combo) x 1
- ◆ Micro SD slot x 1 (SDXC/ SDHC supported), Micro SIM slot x 2
- ◆ Optional RF pass-through connector for WLAN/ GNSS/ WWAN x 2
- ◆ Docking connector x 1
- ◆ DC-in x 1

## Security

- ◆ ARM® TrustZone®

## Power

- ◆ AC adapter (65W, 100-240V AC, 50/60Hz)
- ◆ 4500mAh hot swappable battery, 13 hours battery life<sup>I</sup>
- ◆ Optional 9000mAh hot swappable battery, up to 26 hours battery life<sup>I</sup>
- ◆ Support fast charging<sup>II</sup>

## Rugged Feature

- ◆ IP65 and MIL-STD-810G certified
- ◆ Vibration, shock and 5-foot drop resistance

## Environmental

- ◆ Operating temperature : -20° C to +60° C
- ◆ Storage temperature : -30° C to +70° C
- ◆ Humidity : 95%, non-condensing

## Dimensions & Weight

- ◆ 280 x 195 x 23 mm (11" x 7.7" x 0.9") (W x H x D)
- ◆ 1.4kg (3.09 lbs)<sup>III</sup>

## Software

- ◆ DashON

# Accessories



Detachable Keyboard



Vehicle Dock



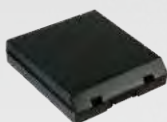
Hard Handle



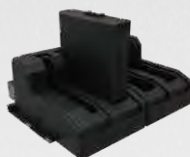
Shoulder Strap



Hand Strap



9000mAh Battery



4-bay Battery Charger



Car Adapter

See website for more accessories.

I. Listed battery life is testing with wireless on. Battery life rating is for comparison purposes only. Actual battery life varies by configuration, application, power management and operating conditions.

II. The fast charging is only available in turn-off state

III. Actual weight varies by configurations and optional accessories.