



# Power and Performance for the Port Industry



Corporate Headquarters  
U.S. Tsubaki Power Transmission, LLC  
301 E. Marquardt Drive  
Wheeling, IL 60090  
Tel: (800) 323-7790  
Fax: (847) 459-9515  
[www.ustsubaki.com](http://www.ustsubaki.com)



Roller Chain Division  
821 Main Street  
Holyoke, MA 01040  
Tel: (800) 323-7790



Conveyor and Construction  
Chain Division  
1010 Edgewater Drive  
Sandusky, OH 44870  
Tel: (800) 537-6140  
Fax: (419) 626-5194



Sprocket Manufacturing  
Mississauga, Ontario  
Tel: (800) 323-7790

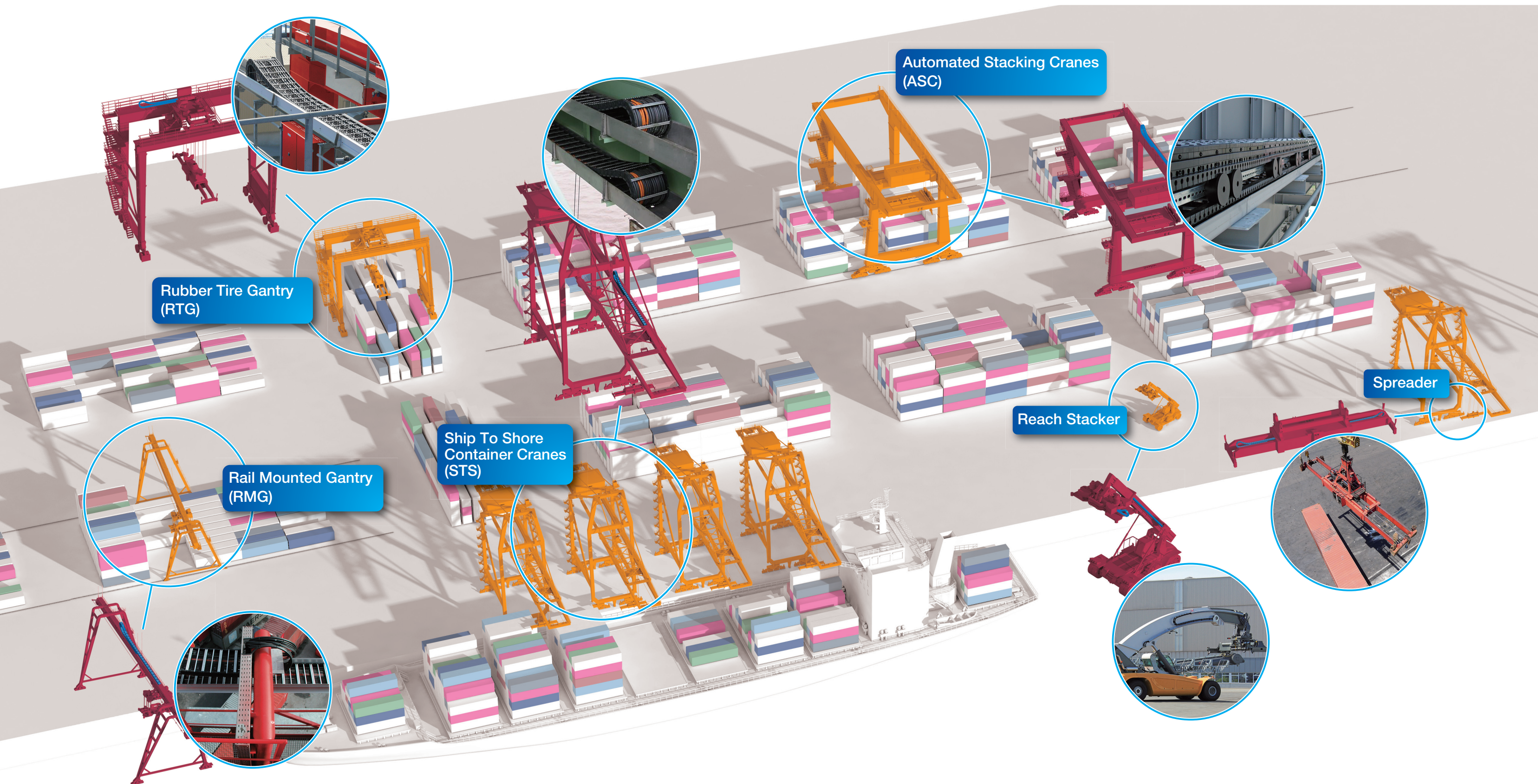


KabelSchlepp Division  
7100 W. Marcia Rd  
Milwaukee, WI 53223  
Tel: (800) 443-4216  
Fax: (414) 354-1900

# INNOVATIVE SOLUTIONS FOR THE PORT AND CRANE INDUSTRY

Time is money in the port industry, and every delay means less profit. High quality, high precision power transmission and conveyor components are a key part of your operations. With nearly a century of successful manufacturing know-how and technical

expertise, Tsubaki can provide the best solution to keep port operations running reliably and total cost of ownership down. Put the Tsubaki Advantage to work for you.



## INNOVATIVE SOLUTIONS FOR THE PORT AND CRANE INDUSTRY

Proven systems - tested under real conditions

### TRAXLINE®

#### High-Flex Crane Cables - 700 Series

##### Developed for

- Long travel length crane applications
- -35°C to +90°C
- Outdoor/indoor use
- High speed
- Offshore/onshore applications
- Very high electrical voltages
- Small bend radii
- High acceleration

##### Properties

- High-flex design
- Side force resistant
- Seawater resistant
- Ozone resistant
- UV-stable
- Crude oil resistant
- Flame-retardant
- Cut resistant
- Halogen-free
- Silicone-free
- CFC-free
- Conforms to RoHS II
- Marked in meters
- Mud resistant

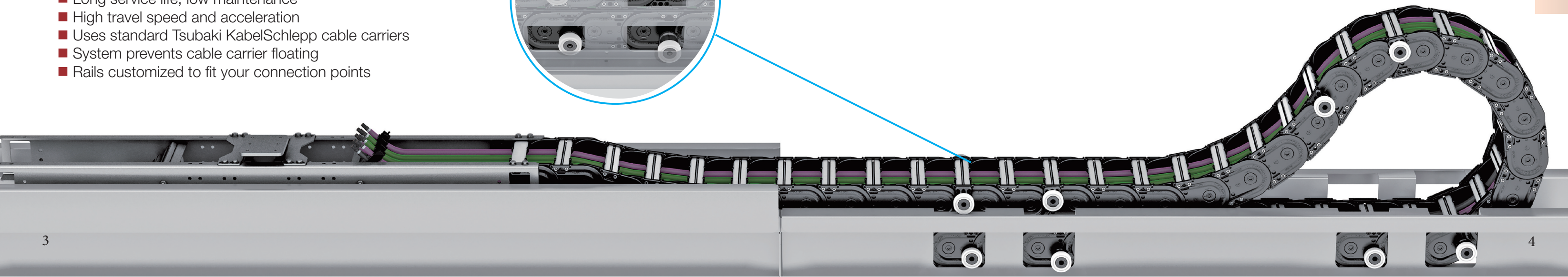
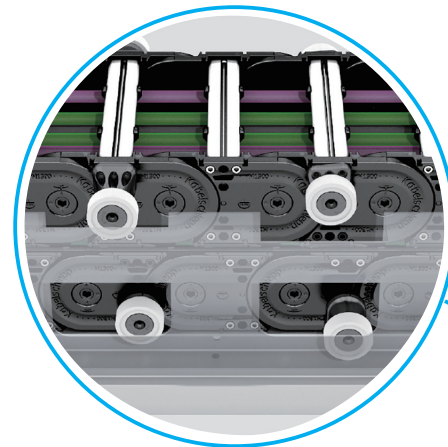


Testing facility for all cable carrier types

- Capable of testing two independent cable carrier systems
- Can test both gliding and rolling systems
- Can test travel lengths over 100 meters
- High speed (5m/s) testing

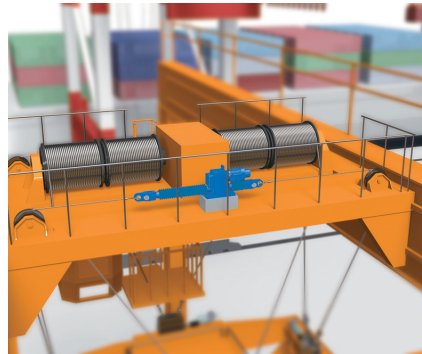
#### Features of Roller Supported Chain (RSC)

- 100% rolling cable carrier
- Suitable for any travel length
- Rollers decrease push/pull forces 90% on travel lengths of 50m and more compared to gliding arrangements
- Rollers do not contact each other
- Long service life, low maintenance
- High travel speed and acceleration
- Uses standard Tsubaki KabelSchlepp cable carriers
- System prevents cable carrier floating
- Rails customized to fit your connection points



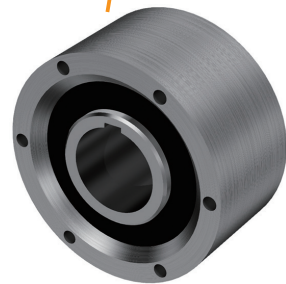
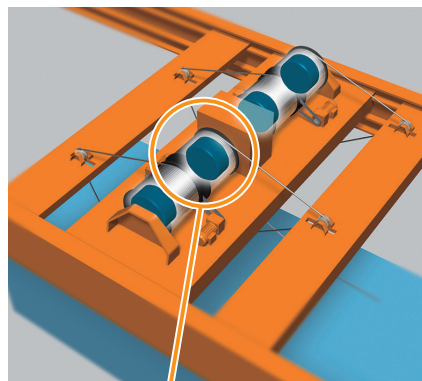
# Power Cylinders & Cam Clutches

Tsubaki Power Cylinders are all-electric linear actuators that can be run with simple wiring - there is no need to run expensive hydraulic lines to power them. The benefits of no oil leaks, lower energy costs and clean operations are driving more port users from fluid power to Tsubaki Power Cylinders worldwide.



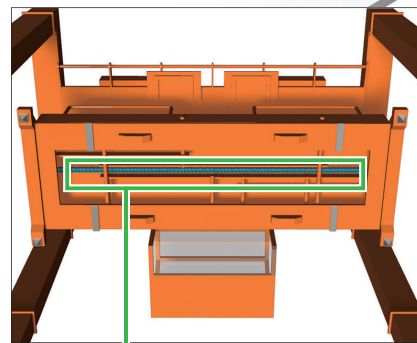
## Container Tilting

Adjusts container tilting (skew, trim, and list) by moving the hoisting rope.

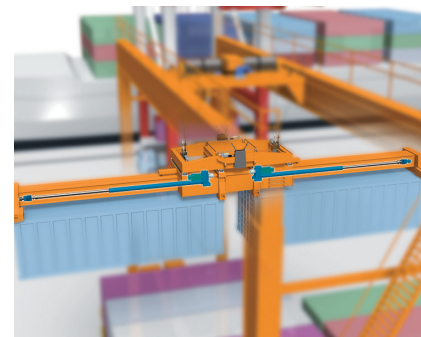


## Anti-sway Mechanism (Cam Clutches)

Tsubaki Cam Clutches are used widely in RTG cranes in the container anti-sway mechanism. Tsubaki offers special models for precise engagement and long life, thereby increasing available operating time and reducing down time.



Tsubaki roller chain drives and shuts the spreader arms.



## Arm Extension

Adjusts the length of the arm to match the size of the container (such as for double containers).

# Drive Chains

Tsubaki drive chains, including Roller Chains, heavy duty Super Chains, and Leaf Chains, can be found in port facilities around the world because they offer the best in chain performance. Port operators use Tsubaki drive systems because their excellent durability reduces replacement frequency from problems associated with breakage and wear.

## Container Cranes

## Transfer Cranes

## Power Cylinders (for steering)

Power Cylinders turn RTGs by rotating the wheels 90 degrees.

## Driving

Super Chains drive the rubber tires.

## Lifting

Tsubaki premium leaf chains are used in container lift applications and offer high strength and long wear life. For maximum wear life, choose a recently released Tsubaki extended life leaf chain.